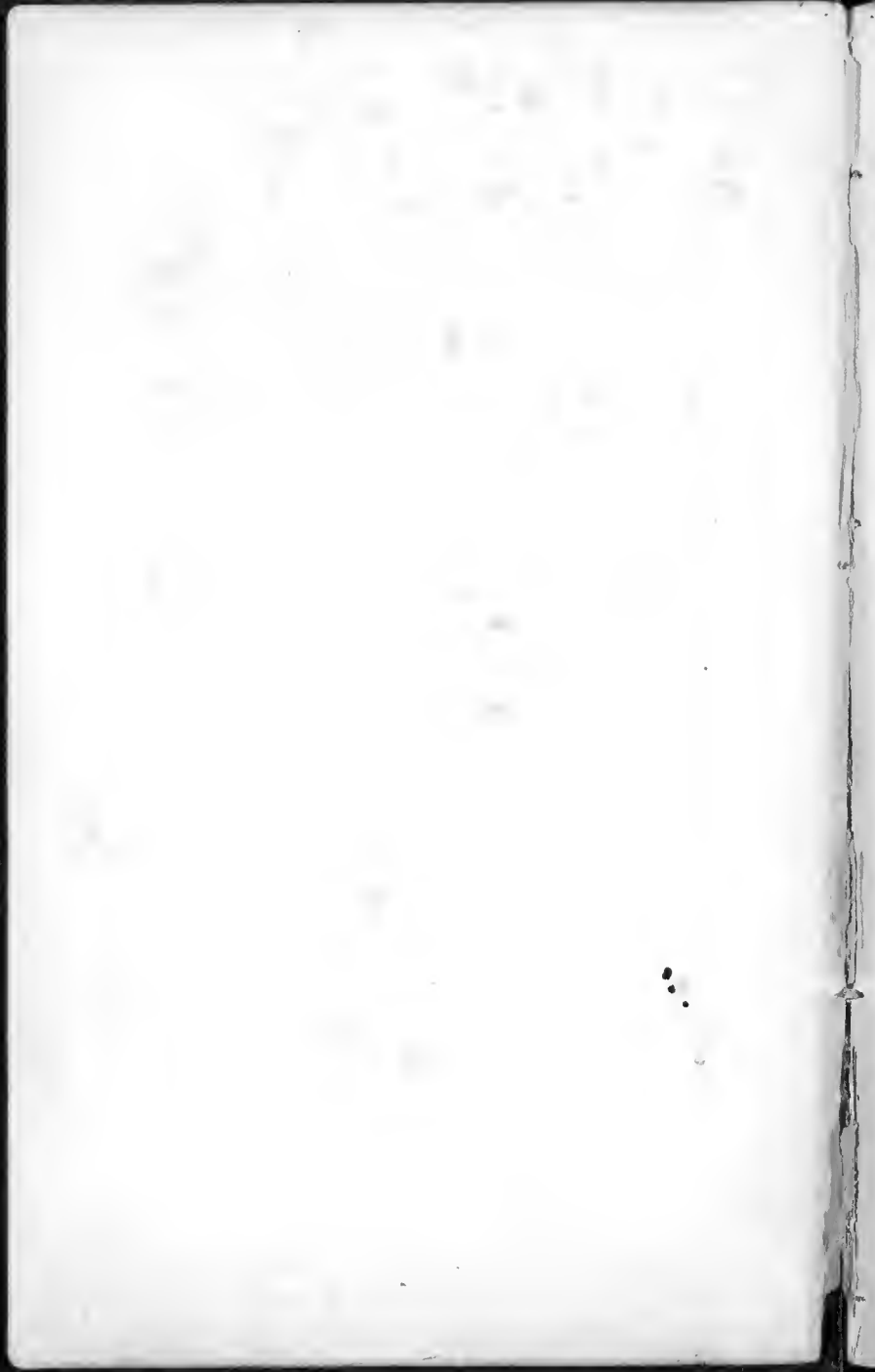


11

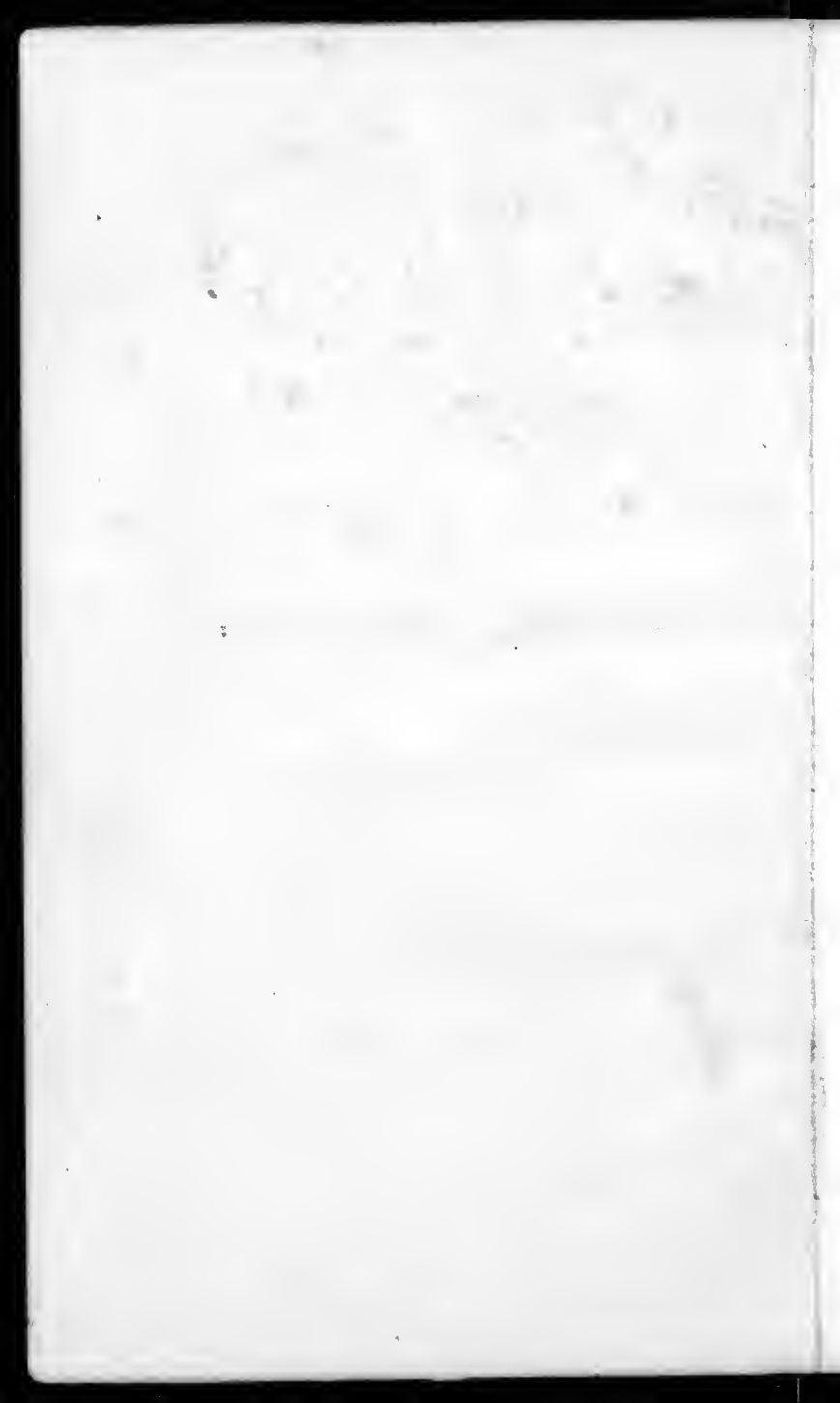
1940-2150

1940-2150



Brewer

11



July 24<sup>th</sup>  
Came on from  
Sonora to Murphy

Buckley leaves beginning  
to ~~fall~~ die, and the other  
ones to fall off -

July 29<sup>th</sup>

From Murphy to  
Big Trees - joined by the  
rest of the party - came on  
to Camp 129, alt ab. 9500 ft  
over hills perhaps 400 ft  
higher or more.

*Quercus californica* all  
the way, - towards the top  
Chapparral oak - No *Quercus*  
*fulvescens* seen - *Pinus*  
*ponderosa*, *lambertiana* &  
at least *P. jeffreyi*

At Camp and  
near that height struck

Big Tree Road  
Camp 129, about 6.00 p.m.  
30<sup>th</sup> July

P. contorta, before Picea  
<sup>amarula</sup> mobilis, Sugar Pine or yellow  
pine has ceased -  
Libocedrus all the way

1940 Delphinium  
caulis glaucous - stalks 5<sup>ft</sup> high  
covered with glaucous  
blossom <sup>hollow</sup> fls bright blue  
violet; spur corrugated,  
By stream, seen in many  
places on the Mt in the  
Coast Range - in cañons -

1941 Aconitum  
Stalk 4 to 5 ft high - pubescent -  
solid; lvs deep green, smooth  
fls white or with faint purple  
tinge - by stream -  
white balls in axils of upper  
leaves -

Camp 129 } Big Tree Road  
                  } alt about 6.000 ft  
                  } July 30<sup>th</sup>



1942 *Solidago*

Common in woods-

1943

Wet places - rays white

1944

Crucifer - fls yellow

1945 *Oenothera*

Flowers white, nocturnal - dry hills

1946

Umbelifer - fls pure white

1947

Grass. common - lvs pubescent

1948

*Cynoglossum*  
Moist shady places

Big Tree Road  
Camp 124 | about 6.00  
30<sup>th</sup> July

1949

Malvaceous - Common in  
rather dry place

1950

*Polygonum ramosissimum*  
rather dry soil

1951

Yellow composite, moist place  
5 ft high -

1952

*L. cus*  
Over hills, 3 to 5 ft high; forms  
chappard with many nut  
galls -

1953

*G. coccia*  
Over dry hills

1954

Umbellifer - dry hills -  
3 to 4 ft high

Big Tree Road  
Camp 129, about 6.000 ft  
30<sup>th</sup> July

1955 Polyg. <sup>mon</sup>  
dry hill side -

1956  
Composite - fls delicate rose  
dry Hill

1957  
Fls pink-violet - upper lip  
twisted -

1958 *Colonia*  
Fls rich Salmon color

1959  
Umbellifer - dry hill

1960 *Sorbus*  
a bush 4 to 6 ft high - Hill side

1961  
Umbellifer - moist place -

July 31<sup>st</sup> Camp 130  
Silver Valley and hill S E  
800 or 900 ft<sup>0</sup> above camp  
Camp<sup>130</sup> at 7.351 P

1962

Yellow Composite among  
dry rocks by camp

1963

Pellaea

Among dry granite rocks

1964

Carex

Dry meadow by camp

1965

Polygonum

Moist meadow

1966

Carex

Wet place by camp - abundant

1967

Carex

Moist meadow near camp

1968

Carex

Rather dry hill side above  
Camp 8,000 ft.

Silver Valley, Big Bend road

Camp 130 1 7.35 PM

31<sup>st</sup> July



1969 Carex  
With last 8. over

1970 Carex  
Rather dry places in  
by camp

1971 Trifolium  
In meadow by camp

1972  
Composite, fls orange

1973. *Gea circinnatum* (no)  
Dry Hills

1974 Spirea  
Dry volcanic rocks - 800 to 900 ft  
above camp - 8. over

1975 *Pinus Balfouriana*  
Hills above camp - 800 to 900 ft  
800 ft and over

Silver Valley. Big Tree Road

Camp 130 -  $\int^{\wedge}$  alt 7,351 ft

July 31

1976

Grass from dry hill sides  
800  $\frac{ft}{m}$  above camp - 8,000 ft

1977

Carex  
Hill sides 600  $\frac{ft}{m}$  above camp  
8,000 ft.

1978

*Potentilla fruticosa*  
Pond by camp

1979

Fern from dry granite rocks

August 1 $\frac{st}{4}$

Came on to camp  
8,200 ft 8,500 ft  
131, alt near the summit of  
Sierra Mt trail, over high  
granite hills to the Mok-  
River - *Picea* <sup>arabica</sup> in great abund-  
-ance - *Pinus californiana*, the  
variety of *Phendrosa* the Abies

August 1<sup>st</sup> Ebbetts Pass

etc. Then down a large  
hill to the river up to  
Camp - same vegetation with  
<sup>mountain</sup>  
Minute Cedars

1980 Mimulus  
wet place - fls flesh color <sup>8.20.82</sup>

1981 Epilobium  
wet place

1982 Crucifer - dry place

1983 Composite - fls yellow

1984 Portulacac?

Ebbetts Pass

Hill above Camp 131. Camp elev. 9552'

Aug 1<sup>st</sup> specimens elev. 9700 ft

1985

Shrubby Composite - dry soil  
on hill tops. 9.000 r

1986

Composite - dry soil 9.000

1986

rather dry place 9.000

1987

Composite - dry soil - 9.000

1988

Umbellifer - over dry hills 9.000

1989

Cucifer - in seed - common 9.000

1990

Composite - fls yellow dry hills -

Ebbetts Pass

Hill above camp 131, 8,500 - 9,000 ft

August 1<sup>st</sup>



1991

Liliaceous dry hill sides

1992

*Juncus*

Wet bank - near snow -

1993

*Galium*

Dry places on hill - seen  
on the Mts to 12000 ft

1994

rather moist place near the  
snow, within two rods of  
large bank of snow -

1995

*Senecio* - dry hill sides -

1996

*Artemisia* - over dry hills -

1997

*Onopordium* - fls rose - among rocks -

Peak 1000 ft above camp - alt about 9500 ft  
Ebbetts Pass

2<sup>d</sup> Aug/63

Ebbetts Pass

1998

Grass on dry hill sides

1999

Grass on moist hill sides  
and abundant -

2000

Artemisia - hill sides -

2001

Barbicum  
Hill sides

2002

Grass - dry hill sides

2003

do

do

2004

do

do

Above Camp 131 Ebbetts Pass <sup>7.5 miles</sup> below  
2<sup>d</sup> Aug

2005

Composite - dry hill top

2006

Mint - from dry mountain top - very abundant & very fragrant

2007

*Abies Williamsone*

Seen on all the heights - nearly as high as *Pinus flexilis* - Small tree 30 or 40 ft or more - at times a mere shrub - cones often truncated at base when open, & the scales reflexed. Often a large tree 4 feet in diameter -

2008

Small - rather dry hill top

Above 131 Near Elberts 8.500 9.500 ft.  
2<sup>d</sup> Aug

2009 Parasitic, on *Eriogonum*  
flowers rose -

2010 Shrub on very dry soil  
1 to 7 ft high -

2011 Umbellifer; dry hill sides -  
3 to 4 ft high -

2012 *Lupinus*  
Dry hill sides; fls white

2013 - *Carex*  
Hill above camp

2013 *Carex*  
With last

Above 131 Gilberts Pass. 8.5v. 9.5v 11.  
2<sup>d</sup> Aug



2014 *Gilia*  
Abundant over dry hills  
above and about camp

2015 *Gilia*  
Fls yellow; dry hills -

August 3<sup>d</sup>

Came on to  
Camp 13<sup>N</sup>; found plants &  
near little lake at the  
summit alt - 12,000 ft.

2015 *Carex*  
Scales very black; border of lake  
8000 ft.

2016 *Tofieldia*  
in lake

3<sup>d</sup> August Ebbetts Pass. 8.5000.

2017 *Hypnum*  
in water

2018  
Sphagnum ; in soil by lake

2019 *Carex*  
Near lake ; or rather moist soil

2020 *Carex*  
With last.

2021 *Chenopodium*  
(*le. album?*) by lake

2022 *Zosteroceros* - fls blue

2023 *Carex*  
Tall, often 4 ft.; not too dry soil near  
lake - also near Camp 131

2024 *Carex*  
With last

2

2

August 3<sup>d</sup>

Whetstone

Camp 132 - In  
Cañon 2 to 3 miles East of  
Summit of Big Lost Pass  
Aug 3<sup>d</sup> - alt 7,000 ft

2025

Carex

Dry ravine - not abundant

2026

*Sphaerocarpon capitellatum*,  
Umbellifer; 5 ft high - flowers  
in heads, pet very woolly  
by steam -

2027

*Pecunia*? no more seen -  
dry rocks in Cañon

2028

Crucifer - dry rocks

Camp 132 Elbert, Pa. 700. 8000 ..  
3<sup>d</sup> August

2029

<sup>Carex</sup>  
Seeds blighted by fungus <sup>and</sup> or  
black, or "smut"

2030

Umbellifer; valley near camp

2031

do ; do -

2032

Called "Wild Parsnip"; said  
to kill many cattle which  
eat it - acts as a narcotic  
when eaten by cows, the  
milk affects persons eating  
it -

2033

Fruit of Honey Suckle -  
berries bright black

Camp 132 Ebbetts Pass. 7 am. 8 am W.  
3<sup>d</sup> Aug



2034 Zamnesia  
Dry hills - plant low -  
among rocks -

2035  
Composite; fls pink - Dry hills  
August 4<sup>th</sup>  
Trip to Silver  
Mountain town - 6,200. 7,500 ft.

2036 Scand. ce.  
High bushes; above town -

2037 Quercus variniflora  
A common chapparral oak;  
seen much higher -

2038  
Fern; among rocks, near  
and above camp

Silver Mountain

Aug 14<sup>th</sup> 6.200 to 7.500 ft

2039 *Gerocarpus*  
Common on dry hills  
about town -

2040  
Composite; wet place  
near town

2041 *Equisetum*  
Near town by stream

---

August 5<sup>-th</sup>  
Trip up Silver  
mountain - alt 11,000 ft.

2042 *Gilia*  
Fls white; near base of <sup>11,000 ft.</sup> Mt. <sub>n</sub>

2043 *Aster*  
dry soil near top -

Silver Mountain 11,000 ft  
5<sup>th</sup> Aug -

2044

Grass: near summit 11,000 ft.

2045 - Bare

Dry soil; near summit 11,000 ft.

2046

Fls blue - summit 11,000 ft.

2047

Primula?: fls light red.  
After near snow. 10,000 ft.

2048

Hieracium? fls yellow -  
summit on dry soil - 11,000 ft.

2049

Eriogonum  
Very dry soil near top <sup>10,500 to</sup> 11,000 ft.

2050

Composite - near summit  
11,000 ft.

Silver Mountain 11,000 ft.  
5<sup>th</sup> Aug

2031

Dry soil

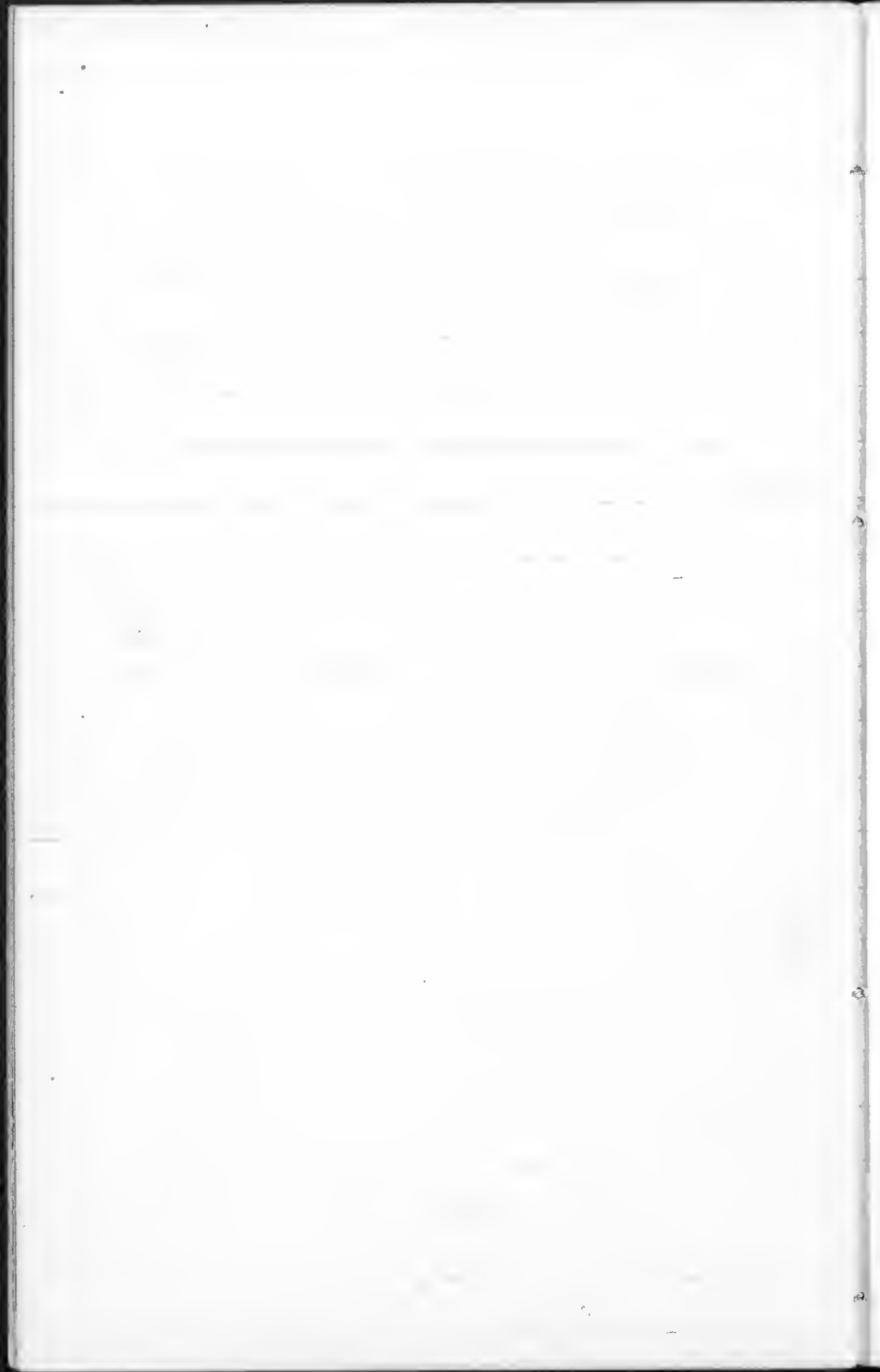
2052

Flowers white

2053.

Very dry soil at top

The highest tree was *Pinus flexilis* which grow at the summit, *Abies Willmannii* nearly to the top  
*Ribes* on the top





6<sup>th</sup> August

To Scandinavian  
cañon, north of Silver  
Mountain - Soil dry &  
cañon hot; cedar - *P. jeffreyi*  
etc in cañon - silver north

2054

Moss: on rocks by camp

2055

Parasitic on *Juniperus*  
*occidentalis*.

2056

*Mertensia*

fls yellow; dry rocky soil

2057

*Artemesia*

Herbaceous near brook

2058

*Artemesia*

do

do

Scandinavian Cation 6.5w - 7.4w sh  
1<sup>st</sup> Aug

2054 *Eriogonum*  
Dry rocky Hill sides -

2060 *Eriogonum*  
With last

2061  
Grass; by brook

About Camp 132 P. m.  
Jeffrey and *Picea amabilis*  
on the rocks - and *Juniperus*  
*occidentalis* -

17<sup>th</sup> August -

To next Pass S  
and Volcanic Cone - Several  
small lakes seen - All the  
specimens are from above the  
pan where obs were taken for Alt.  
about 8,000 ft.

x  $\frac{17^{\text{th}}}{\text{a}}$  August - Elletts Pass. 8,500, 9,000 (!).

2062

Fls. blue; near camp

2063

Carex  
Small, ripe; at edge of  
water, roots in the water - on  
the moss

2064

A canoe  
On Volcanic cone above the  
Pass. 5500, 1, on the

2065

Scirpus  
Rather dry places -

2066

Carex  
Rather wet place, recently  
covered with snow -

2067

Carex  
Scales very black; border of  
little lake

7<sup>th</sup> August Near Elbetto Pass. 8,500 - 9,000 ft.

2068

Grass: not very dry place

2069

*Luzula*  
Hill sides

2070

Fls blue, now withered;  
Summit of cone

2071

Fls yellow -; rosaceous

2072

Grass; dry hills

2073-

Moist places -

2074

Fls blue - near lake

7<sup>th</sup>/<sub>th</sub> August Ebbetts Pass. 8,500 9,000 ft



2075 Cary  
by lake

2076 Cary  
Slender: wet place

2077  
Grass; dry hills

2078  
Grass; rather moist places

2079 Cary  
Dry hills

2080 Cary  
Do

2081  
Lychnis ? dry Hill

7<sup>th</sup> August Ebbetts Pass. 8,500 - 9,000 ft.

2082

Umbellifer: Fls white - dry hill  
by snow

2083

Carex  
Dry Granite Hill

2084

Carex  
Rather moist place.

2085

Supenus  
On all high dry hills

2086

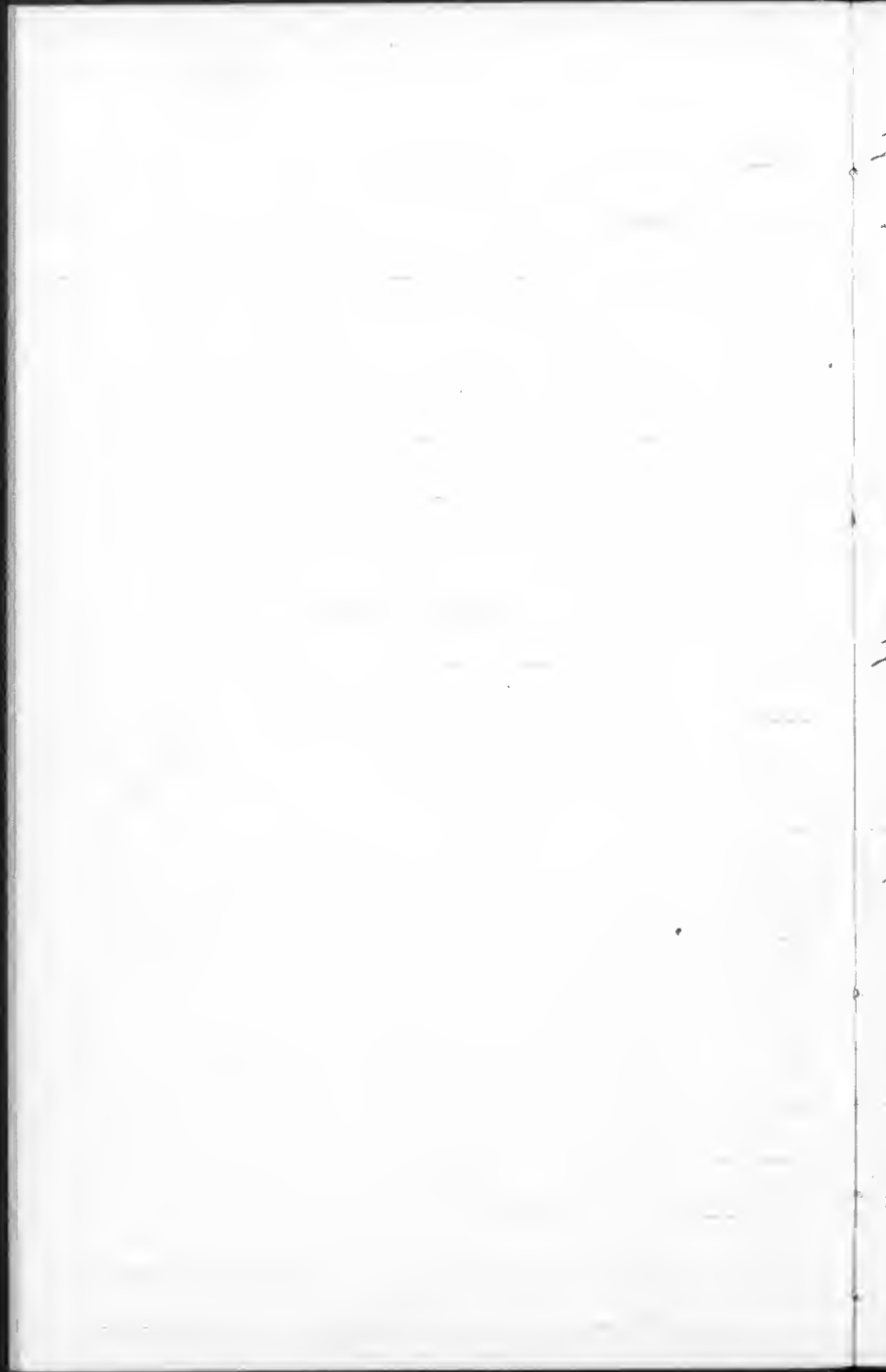
Carex  
Rather moist soil

2087

Gram<sup>v</sup>? Shrubby - dry volcan-  
ic hill -

2088

Gram - dry hills -



2089

Shrub 1 to 2 ft high; leaves  
very fragrant. 8,500 ft

August 8<sup>th</sup> + 9<sup>th</sup>

Went to Carson Pass  
then returned to "Big Trees"

2090

*Spiraea*

Fls in cymes: rose - seen from  
Camp 129 to summit of C Pass -  
6,500 to 8,500 ft

2091

*Sorbus*

Seen to summit of C Pass -  
8,500 to 8,500 ft

2092

*Pinus Murrayana*,

Everywhere

2093

*Picea amabilis*

Common in the higher Sierras  
then - see notes on May,

2  
2  
2  
2  
Lectus - conrollanioribus

2094

Probably composite - big trees -

2095

*Clintonia uniflora*

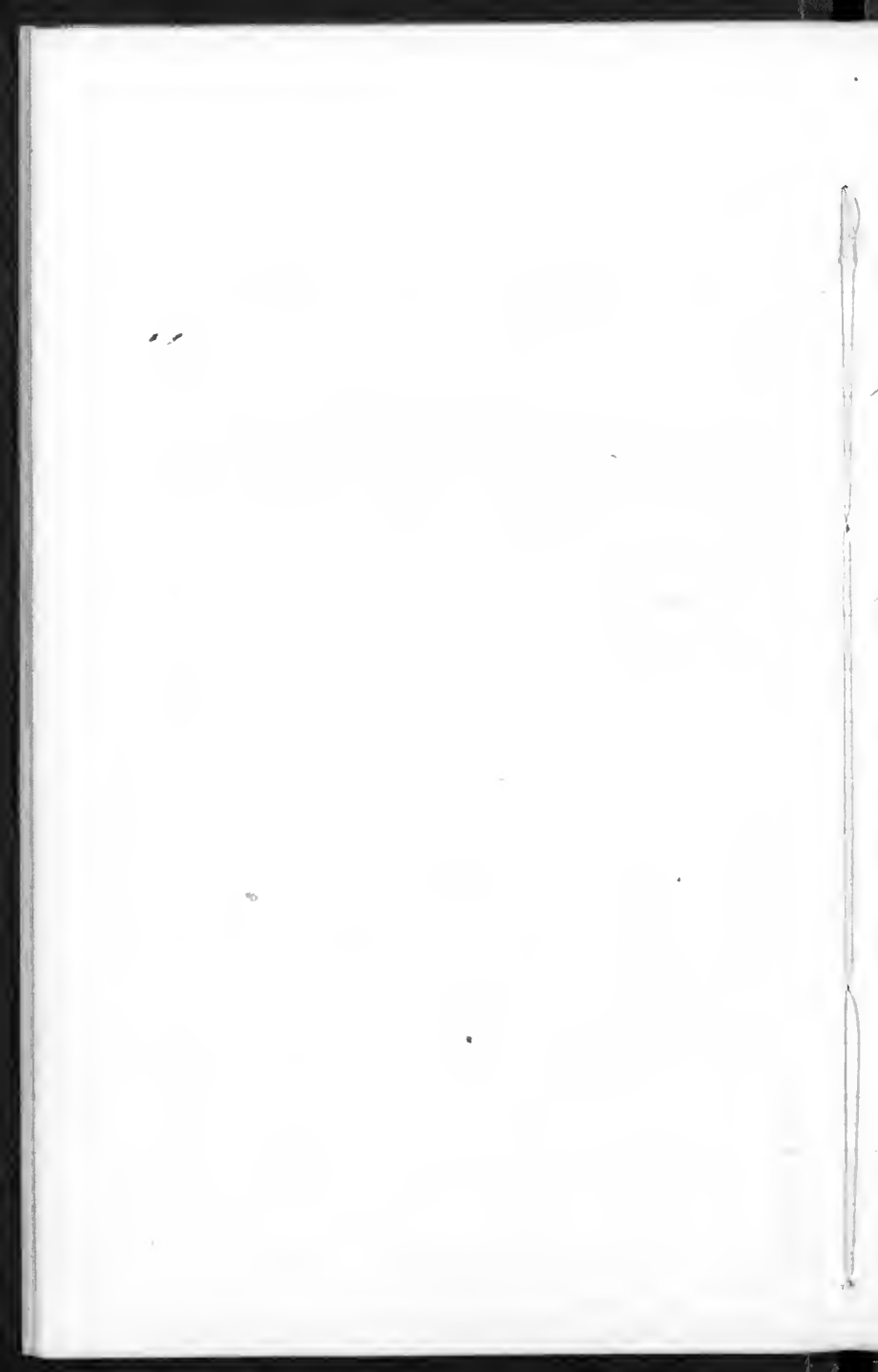
Foliage - in flower earlier -  
Big tree grove in shade -

2096

Orchid: in shade - moist soil

August 11<sup>th</sup> & 12<sup>th</sup>

Rode from Big  
trees to Volcano over the foot  
Hill - Ground very dry - scarcely  
any *Gnaphalium* seen,  
while region an open forest  
of *Pinus salicarpa*, *Platanus*  
& *P. ponderosa* - Some *G. Kelloggii*  
etc - dry hills often green  
with *Pteris aquilina*.





August 14<sup>th</sup>

Came on to  
Camp 134: 21 miles E of Volcano  
alt \_\_\_\_\_, along ~~road~~

Table

large *Abies Douglasii* +  
*Picea grandis* with *Pinus*  
*Lambertiana* + *Jeffreyi*

2097

Near Camp 134

2098

Moist place by camp

August 15<sup>th</sup>

Came to Camp  
135 at Silver Lake - ~~part~~  
The *Q. Kelloggii* continued  
to above camp 134 and  
about as it ceased *Picea*



*Amabilis* came in, and  
in many places became the  
prevailing tree.

*Manganita* (*A. glauca*)  
continues to beyond camp  
the low bushed species  
coming in.

*Pinus contorta* was not met  
until about Coral Flat  
but is the most common  
tree about Silver Lake -

2099 <sup>Camp</sup>  
Silver Lake, by side of water;  
foliage dark green - 7400

2100 <sup>Sp...</sup>  
In outlet of Silver Lake



August 11<sup>th</sup>

Came on to Camp  
136,

Near top of pass, the trees  
met were, *P. contorta* - *P. cia*  
*Amabilis*, *Abies Williamsonii*  
and *Juniperus occidentalis* -  
climbed hill near  
Camp - just as high as the  
Pass

2101

Among rocks

2102

Few among rocks; stem very brittle

2103

Among rocks

2104

Few among rocks

11<sup>th</sup> August 1871

2105 *Chamaecrista*  
Common in dry rocky places

2106 *Carex*  
Among rocks

2107 *Chamaecrista*  
1 to 2 feet high - base shrubby  
berries red - among rocks

2108  
Fern - Common among rocks

2109 *Chamaecrista*  
Flowers yellow - dry sandy soil  
near Summit Lake -

Aug 17<sup>th</sup>  
Climbed peak S of  
Camp - alt 10,563 ft  
All specimens collected above <sup>9,500 ft</sup>  
1/2 distance from camp to top

August 17<sup>th</sup> ~~1853~~ ~~10.563.~~  
900 ft. D. 563.  
(near Grand du Parc.)



2110

Fern among rocks - no more  
seen

2111

*Polyp.* -  
base woody - fls white or rose-  
dry places -

2112

*Hebe. cus*  
Fls delicate flesh-color - yellow  
and bearded in throat

2113

Composite - fls yellow -  
dry hill sides above pass -

2114

Fls rose - borders of lake

2115

*Scirpus crinitus*  
Hot places. Near snow



2116

A shrub 3 to 7 ft high -  
young branches yellow green  
grows near snow in wet  
places near permanent snow  
and will survive being  
buried an entire year -  
Bushes that were covered the  
whole of 1862 but now un-  
covered are still alive

2117

Common on all high  
places here -

2118

Grass: from dry places near  
summit - stem prostrate.

2119

Composite: rays purple  
at summit among rocks -



2120

Yellow Composite; dry places  
Near Summit - 15,000 ft.

2121

*Stemodia*  
Near snow banks 15,000 ft.

2122

*Carex*  
Wet places near snow banks  
15,000 ft.

2123

Flo bright rose violet - Common

2124

Near top - flo white - 10,000 ft.

2125

*Carex*  
Over dry hills near Summit - a  
few hundred feet below  
9,000 ft. to 10,000 ft. near 10,000

2

2

2

2

2

2

2

2126 *Carex*  
Moist places - with last -

2127 *Carex*  
Rather moist places

2128  
Grass in Valley

2129  
*Artemisia?* Over N Side  
of WF very abundant 2000 ft

2130  
Fern (*Pellaea*) among rocks

2131 *Carex*  
Mt place 1000 ft above Camp  
9. 0. 11. 2. 11. 1.





8751th

Summit of Carson Pass -  
*Picea Amabilis* - large  
*Pinus contorta* "  
" *Balforiana* "  
*Juniperus occidentalis* "  
all common & abundant -

2131

Hope Valley: no more seen  
and these specimens poor -

August 20<sup>th</sup>

Climbed Pyramid  
Peak from Steep Ford. 10,000 ft.  
The usual succession of trees  
was noticed - *P. Balforiana*  
very large - some trees 5 to 6 ft  
in diam - *P. flexilis* the highest  
most of specimens below 10,000 ft.

2132

Small - wet place near Camp 7000 ft.

2

2

2

2

2

Sydney Beach, 10. 12. 1884

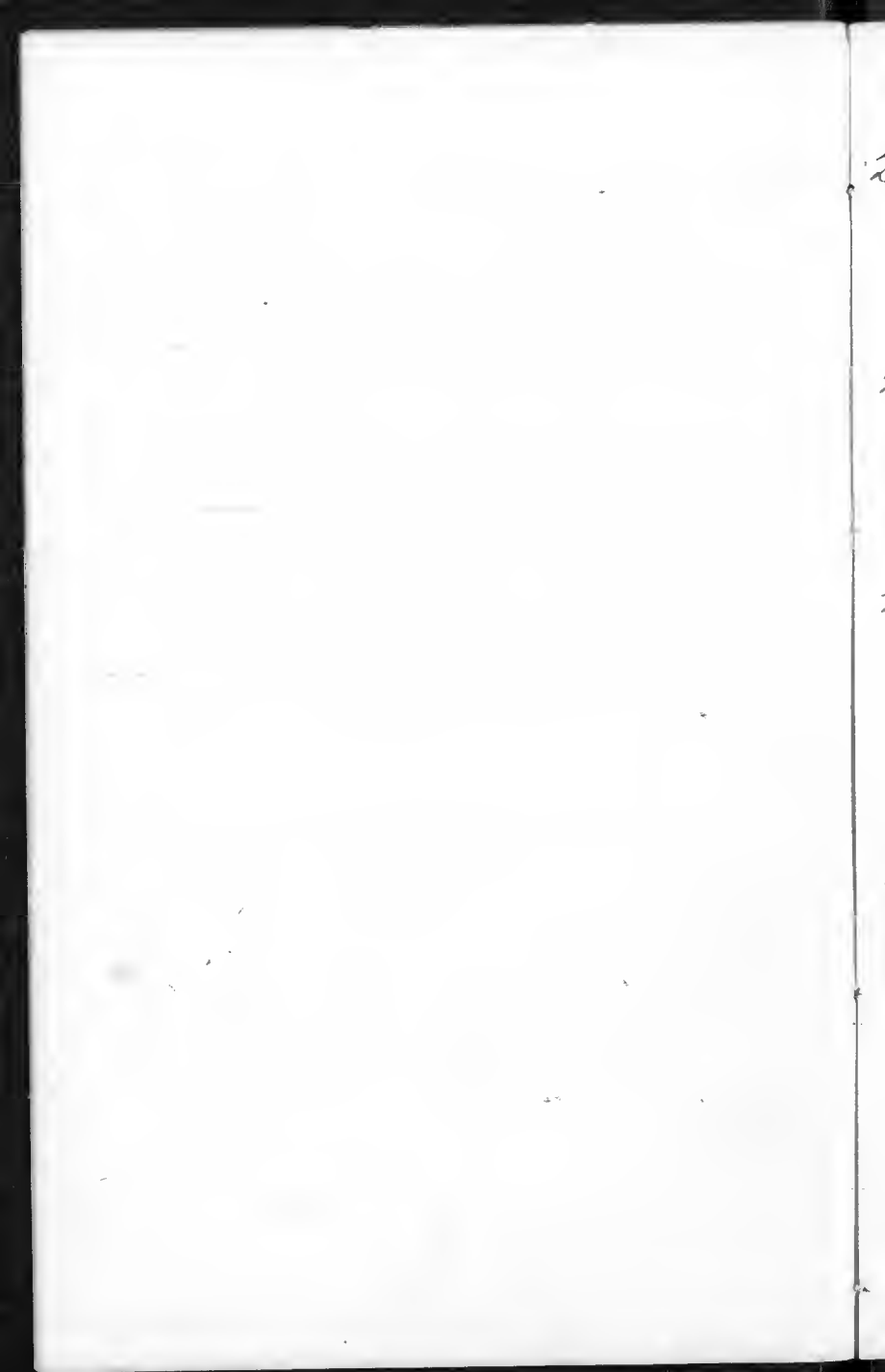
2133 *C. camp*  
Enchanters Night Shade: not  
shady place near camp - not  
seen before except in Bowers care

2134  
Fern 3 to 4 ft high, in  
shady wet place on side  
of Mt. Very brittle, could not  
be well preserved -

2135 *Syzygium*  
Common among the mts in  
not very dry places - 4 to 6 ft high

2136 *Carex*  
Wet places, 1000 ft below top of mts.

2137 *Polygonum bistorta*  
Common in wet places among  
the mts.



Pyramine Peak. 10. 14. 02

2138

Composite: rasp purple -  
Side of Mt in not very dry place

2139

3  
Rather dry soil near the  
Summit - Carex 10. 00. 16

2140

Fern: among rocks near  
Summit - very common in  
dense tufts - 10. 00. 16

2141

Shrubby Composite: Exposed  
places near the Summit  
Common about <sup>5000</sup> 5000 to <sup>10,000</sup> 10,000  
feet on all these peaks -

2

2

2

Pyram. Peak 10. 1912

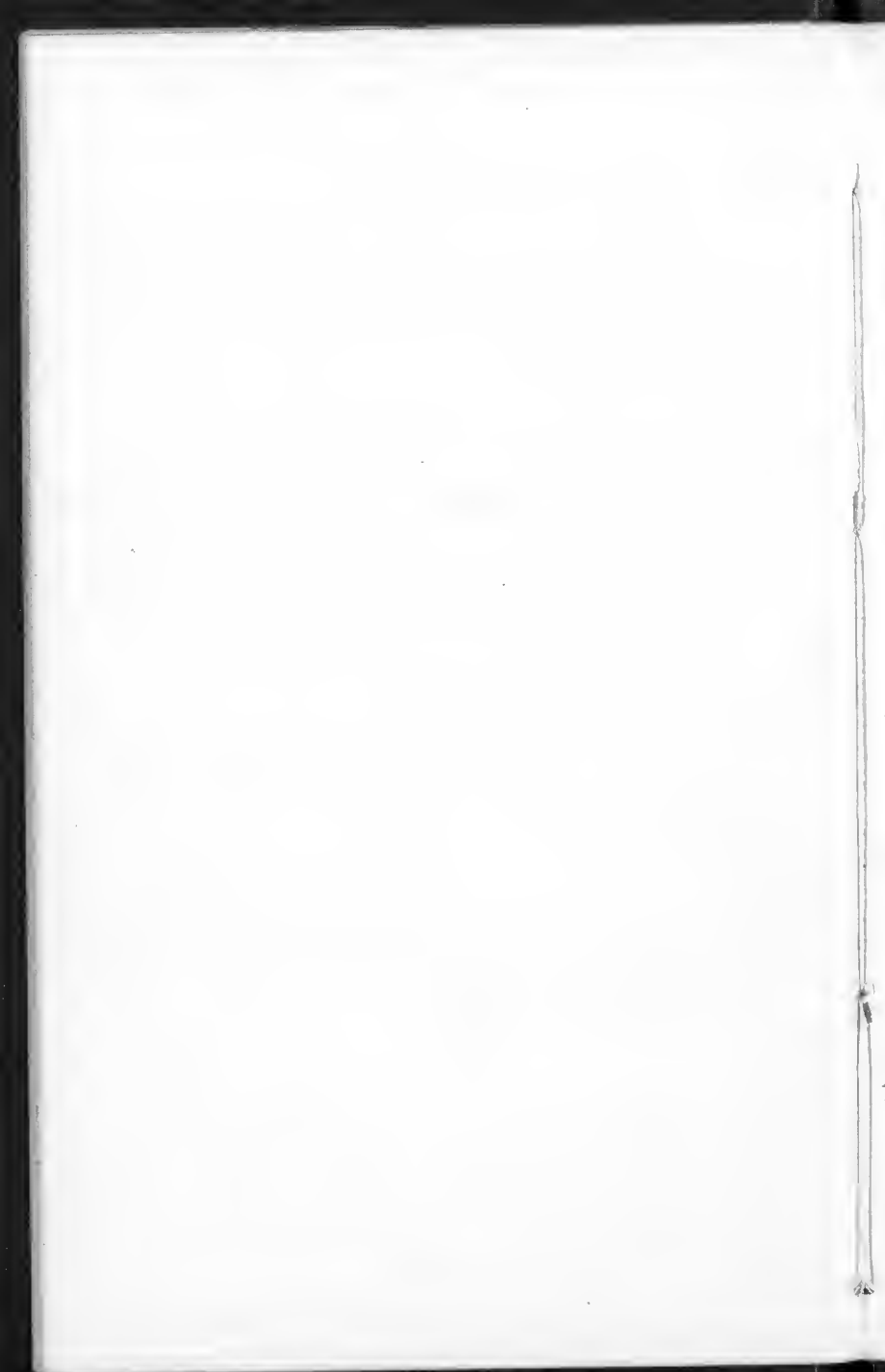
2142. *Guzmania*  
Among rocks near summit  
not abundant, and first  
time seen 10.000 ft

2143 *Carex*  
Near Summit: Several species  
in the higher localities are  
infested with eggs like this -  
10.000 ft

2144  
Fern: among rocks near the  
summit - 10.000 ft

2145 *Carex*  
Leaves; near summit - 10.000

2146  
Fern: among rocks at Slippy  
Ford - no more seen 6-7.000 ft  
*Rhizoma* not accessible





August 21<sup>st</sup>

Came over the  
Placerville Pass to Camp 139  
at Lake Tahoe, 6.30 a.m.  
On the Pass observed *Pentstemon*  
*P. Jeffreyi* - *Picea Amabilis*  
and little *Juniperus Occidentalis*  
In lake valley *Pentstemon*  
& *P. Jeffreyi* -

August 22<sup>nd</sup>

Camp 139. Lake Tahoe

2147 *Juniperus*  
In water of Swamp at the head  
of Lake Tahoe

2148  
In water and on margin of  
Swamp



2149

Woods

Met places very abundant  
near camp.

Met a Teamster at Slippery  
Ford who says he was with  
a party prospecting for timber  
on Kings River - went up to  
Summit - found much  
timber but no way to get  
it out - Found the biggest  
kind of Redwood (Big Trees  
most undoubtedly) in a valley  
two miles long on the S side  
of the river,  $\frac{2}{3}$  distance  
back to Summit -

Valley Two  
miles long - very many trees  
of immense size - many  
seen and tried that an  
80 foot rope would not  
reach around



one tree was 30 and one  
33 good paces around, on  
the mound above the roots  
He had never seen elsewhere  
the big trees - describes a  
very rough country, and is  
evidently sincere respects the  
truth -

August 24<sup>th</sup>  
Came on to  
Camp 148 on E side of  
Lake Tahoe in N.T.  
Many *P. Jeffryi* + *Tibrocedrus*  
on the map - *P. umbra* only  
in wet places -

2150

Very sandy soil - Ho like  
closed minimal, the  
upper lip curved + closed over  
the under, purple on the sides  
and blue

Spir. mangrove

2152

Sandy soil - shrub 2 to 8 ft.  
Common in desert dry place -

2153

*Yucca*  
Pet toristed  
High Swamp on trail 8.8 mi th  
in Square in clay soil

2154

*Yucca*  
Probably *torulata*  
In high Swamp on trail  
E of Lake Tahoe - 7.6 mi th

2155

*Yucca*  
Leafless under *P. Jeffreyi*  
near camp

2156

*Polygonum*  
In Swamp in water - Common  
East of the Creek, but rare to  
the West of it -





2157 *Juniper*  
Foliage: not yet in fruit  
covers Swamp by camp  
densely - in water, often 4 to  
5 ft high -

2158 *Juniper*  
Common under pine trees  
Sometimes 3 ft to 4 ft high  
generally 2 ft to 3 ft. Seen on  
all the passes at 5000 to  
7000 ft but most abundant  
on E or N sides of Lake Falvo.

Aug 25<sup>1</sup>  
Came on to  
Camp 141 at N.E. corner  
of the Lake -  
Got the following —



2159 *Cyperus*

Leaves varnished above - seen  
on all heights - Especially  
the E slope - fls small  
and white

2160

From 4 to 5 ft., by brook  
in shady place on North  
side of Lake

